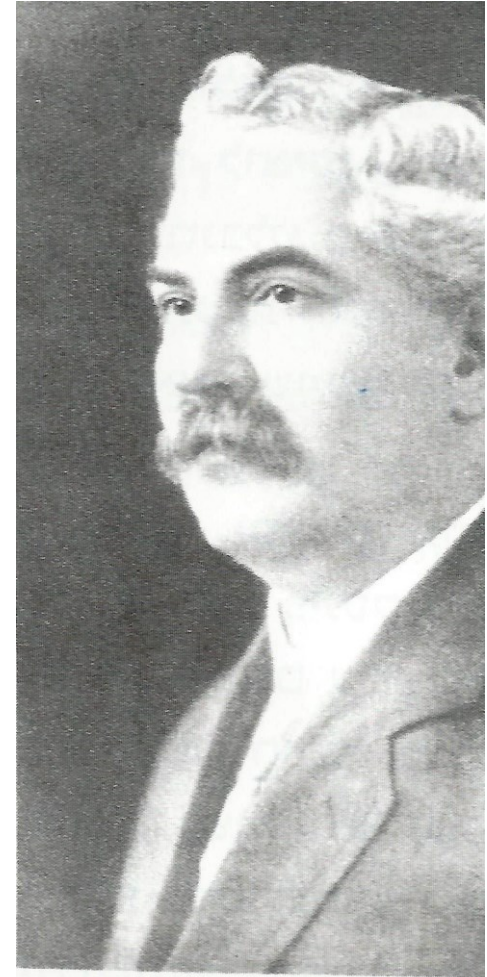


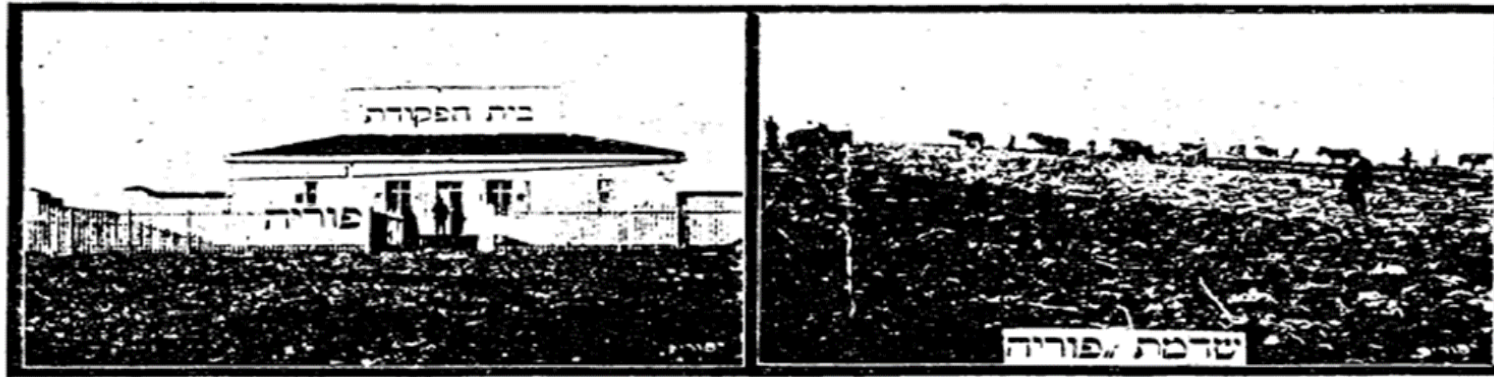
Shimon Simon Goldman

Shimon Simon Goldman (1861-1918) was born in Pinsk, Russia. Emigrated to Holland in his youth and from there to England, where he became involved in education.

In 1898, he made aliyah with his wife Rachel and their four children, to manage one of the JCA's (Jewish Colonization Association) agricultural colonies in the Golan Heights – Bnei Yehuda. The Goldmans set up home in Tzfat, where two more children were born.

The Bnei Yehuda colony met with only partial success and in 1902, the family moved to St. Louis in the U.S.A , where Shimon formulated a new model for settlement in the Land of Israel. There they had another daughter as well.





נחלת האחוזה בארץ

PALESTINE LAND AND DEVELOPMENT CO.

Incorporated, April 1909

Office: 2921 LOCUST ST., ST. LOUIS, MO., Oct. 23, 1914. 191__

The idea was to set up an economic company – "Achuza" (lit. estate), that would be based on the capital of future settlers. They would raise funds for developing and preparing the land, and once the agricultural farm was ready, the permanent residents could then settle there and immediately find work on site.

On October 1, 1908, in the "Zion Hall" in St. Louis, Goldman founded the "Achuza of St. Louis," declaring the company's sole goal as the establishment of a colony in Eretz Yisrael, thus proving to Jews in the United States they could find their home and make their living in the Holy Land.



In October 1910, "Achuza of St. Louis" bought an area of 3,545 dunams from "JCA" and decided to call it "Poria."

The establishment of the colony was quite an innovation in the eastern Lower Galilee at the time, both geographically and nationally, in terms of Jewish settlement in the Land of Israel.

The work began in the summer of 1911. Two buildings were set aside for the Goldman family and the Israelite family, and another two for the farm workers. Another three families arrived from St. Louis as well.

Jewish guards protected the agricultural labor and the construction work. The first guard was from Tiberias. Later, the responsibility for guarding was transferred to "Agudat HaShomer" members.



Goldman's report in 1912: "About a third of the land on the estate has been prepared and olive orchards, almonds and castor oil plants have been planted. Suitable buildings have been set up for accommodation, and we have 35 Jewish workers, for whom we set up a library and arranged a teacher for their children."

In effect, residents of Yavneel and Beit-Gan benefitted from Poria, their neighbor, because it offered them more employment opportunities. "The "Yishuv" had great expectations from the American colonies in the Galilee, from their innovations in milk farming and in growing beef. It was hoped they would serve as an example for other colonies, of private investment in developing Eretz Yisrael.

The house in Poria, in its heyday, housed and hosted the cream of the “Yishuv’s” dignitaries. The family always told the story of one visit in particular: “It was 1913 and there were many arguments in the community. A delegation of Rabbis, headed by Rabbi Kook – then Chief Rabbi of Tel-Aviv-Jaffa – came to visit. Granddad hosted them warmly and with great largesse. The evening prayers, a kosher meal, then the Rabbi spoke and the evening ended with some hearty singing and lively dancing, with the Rabbi wearing a kaffieh (headscarf) on his head and holding a shabaria (Arab knife) in his hand, dancing in circles together with the pioneers...”





Shimon's daughter, Chana, married Yosef Nachmani in 1914. He was the General Secretary and Treasurer of the "HaShomer" organization.

After the organization was dismantled and the "Haganah" established, he became one of its commanders, responsible for arms acquisition. He was one of the founders of the British Police, Security Officer for the Mounted Police and responsible for the security of Tiberias.

From 1935, Joseph was appointed to redeem land on behalf of the Jewish National Fund. The Nachmani home became a hub of activity, discussions and decisions, with Chana, having English as her mother tongue, helping her husband in his crucial work with the British authorities and land redemption.

31 Jewish villages were built on the 90,000 dunams that Yosef Nachmani redeemed.



President Yitzhak Ben - Zvi's visit to the village of Tavor 1957, to the left of President David Goldman and next to him Rabbi Ben Zion Levi To the right of President Yosef Nachmani and his wife Hannah Nachmani

We are now seeking to build an educational Visitors Center at “Chavat HaShomer” in Sejera, which – among other things – will tell the story of the important contribution of the St. Louis community and the Goldman family to Jewish settlement in the Galilee, and the contribution of the “HaShomer” organization and Yosef Nachmani to instilling the basic values of new Zionism on the land of Eretz Yisrael:

Jewish security,

Jewish labor,

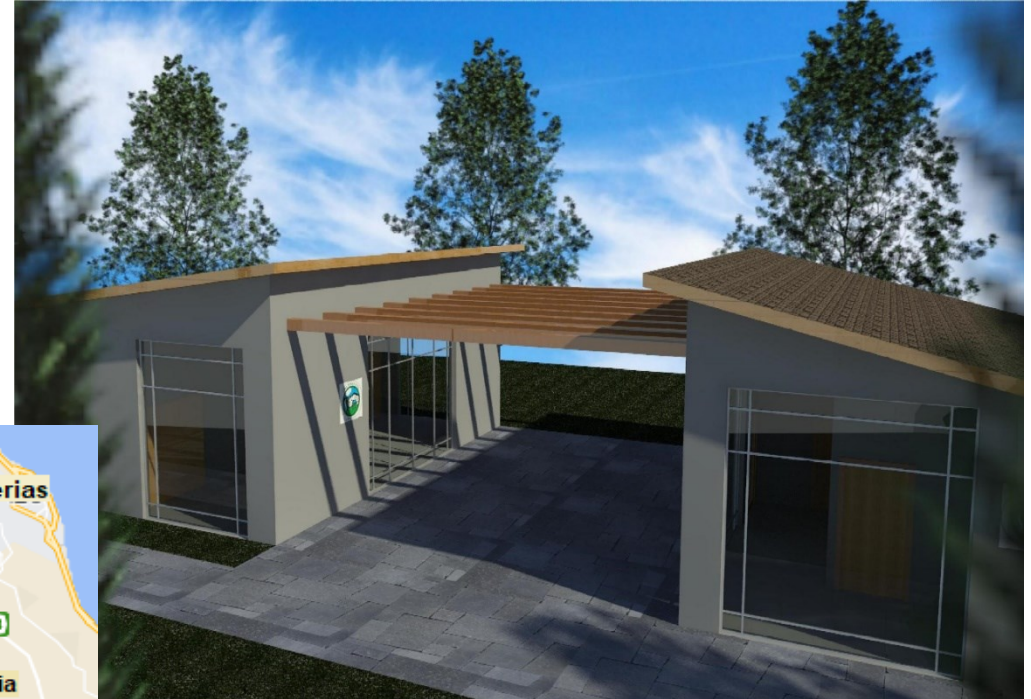
Jewish communities.

The center will be called

“Yosef and Chana Nachmani’s House“

We will be grateful for your involvement

in fulfilling our vision, and thank you for your generosity.





Your's sincerely Datya Itzhaki, chairwoman

Association no: 580528453

datya222@gmail.com **972-50-5246770**